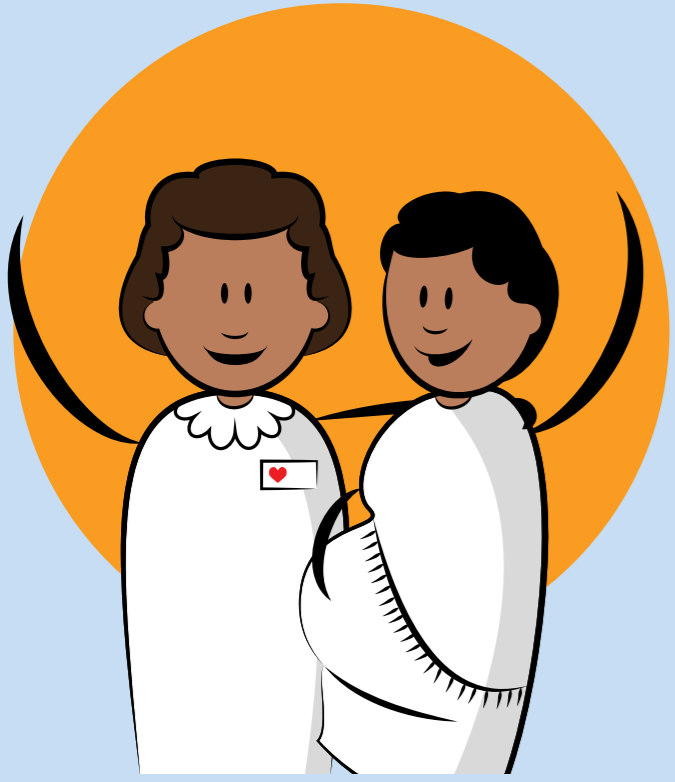


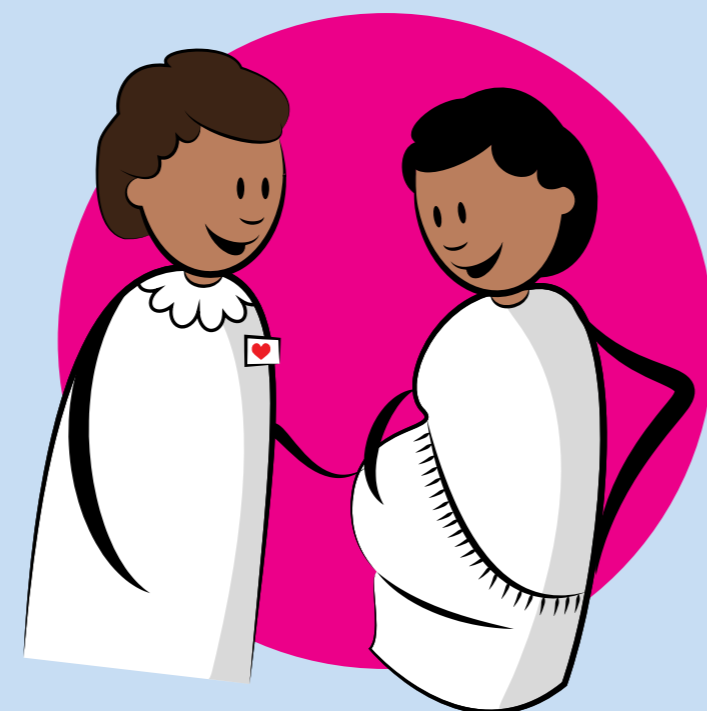
Essential Competencies for Midwifery Practice

2018 UPDATE



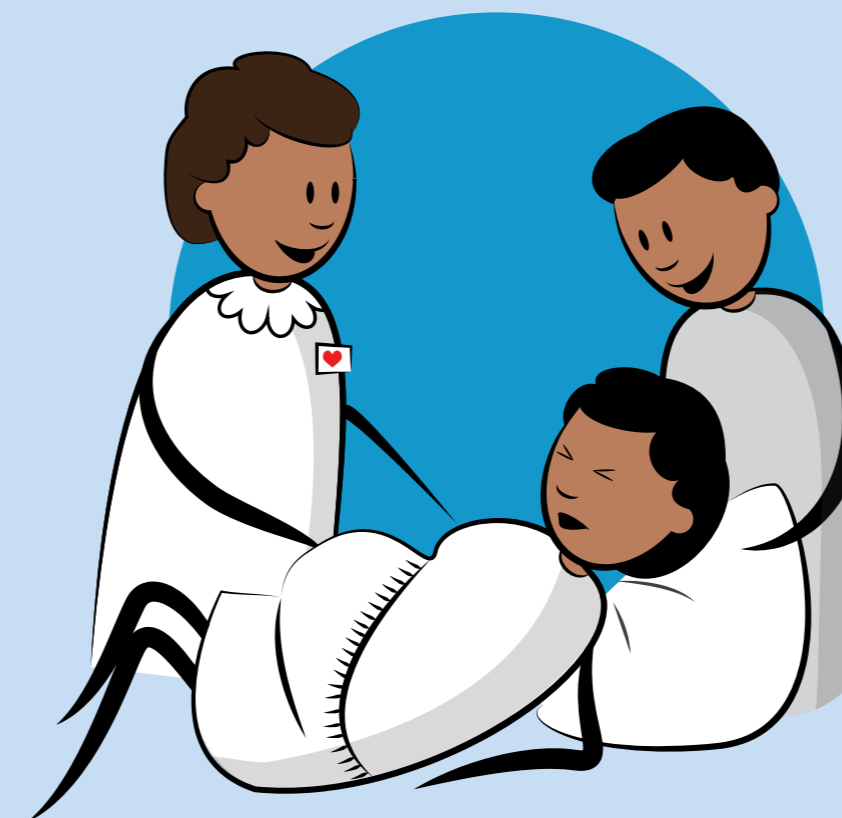
1. GENERAL COMPETENCIES

- 1.a Assume responsibility for own decisions and actions as an autonomous practitioner
- 1.b Assume responsibility for self-care and self-development as a midwife
- 1.c Appropriately delegate aspects of care and provide supervision
- 1.d Use research to inform practice
- 1.e Uphold fundamental human rights of individuals when providing midwifery care
- 1.f Adhere to jurisdictional laws, regulatory requirements, and codes of conduct for midwifery practice
- 1.g Facilitate women to make individual choices about care
- 1.h Demonstrate effective interpersonal communication with women and families, health care teams, and community groups
- 1.i Facilitate normal birth processes in institutional and community settings, including women's homes
- 1.j Assess the health status, screen for health risks, and promote general health and well-being of women and infants
- 1.k Prevent and treat common health problems related to reproduction and early life
- 1.l Recognize conditions outside midwifery scope of practice and refer appropriately.
- 1.m Care for women who experience physical and sexual violence and abuse



2. PRE-PREGNANCY AND ANTENATAL

- 2.a Provide pre-pregnancy care
- 2.b Determine health status of woman
- 2.c Assess fetal well-being
- 2.d Monitor the progression of pregnancy
- 2.e Promote and support health behaviours that improve well being
- 2.f Provide anticipatory guidance related to pregnancy, birth, breastfeeding, parenthood, and change in the family
- 2.g Detect, manage, and refer women with complicated pregnancies
- 2.h Assist the woman and her family to plan for an appropriate place of birth
- 2.i Provide care to women with unintended or mistimed pregnancy



3. CARE DURING LABOUR AND BIRTH

- 3.a Promote physiologic labour and birth
- 3.b Manage a safe spontaneous vaginal birth and prevent complications
- 3.c Provide care of the newborn immediately after birth



4. ONGOING CARE OF WOMEN AND NEWBORNS

- 4.a Provide postnatal care for the healthy woman
- 4.b Provide care to healthy newborn infant
- 4.c Promote and support breastfeeding
- 4.d Detect and treat or refer postnatal complications in woman
- 4.e Detect and manage health problems in newborn infant
- 4.f Provide family planning services



International
Confederation
of Midwives

Strengthening Midwifery Globally

Want to know more?

Find the complete document at
www.internationalmidwives.org